



PROFILE

A Tradition of Excellence

The winning combination of fast assembly and superior playing characteristics is now available in the PRO-KING[®] portable basketball floor by Horner. Now the smallest gymnasium or largest arena can easily schedule a two event day.

The PRO-KING is constructed to meet the demands of professional and collegiate competition. Since 1891, Horner Flooring has been a leader in hard maple flooring. This tradition is reflected by the many floors currently in use by NBA teams and national recognized colleges and universities. Like all Horner basketball floors, the PRO-KING exceeds competitive standards for playability. In fact, a PRO-KING portable floor has been the floor of choice for the NBA All Star and NCAA Final Four games since 1983.

PRO-KING portables bridge the gap between the playing qualities inherent in permanent floors and the fast down requirements of a multi-event facility. Add to this the high quality appearance and detail finishing associated with all Horner floor systems and you will be convinced that the PRO-KING is a superior value.

Fastest Assembly Available

The PRO-KING is the fastest and simplest portable to assemble on the market today. Requiring only 6-8 man hours by an experienced crew, this quality engineered floor can be put down and

ready for play. This unequaled time-saving performance is accomplished without special tools and no loose hardware to hold the floor together.

Consisting of 203 4' by 8' (nominal) panels and 14 4' by 4' (nominal) panels, the 60' by 112' (nominal) floor is constructed with an accuracy that permits interchanging of panels subject to court markings. Interlocking finger joints at the panel ends with a tongue and groove fit at the sides allow perfect alignment. Since there are no continuous seams at the joints, the finished appearance is that of permanent strip flooring.

The PRO-KING is designed to be easily installed over concrete, synthetic or approved insulated floor of an ice arena. Each panel is easily guided into position with Horner's patented Pro-Pivot hinge and securely fastened by a sliding lock. Completely hidden from view, this patented system has no loose hardware to be mislaid or damaged during the frequent installation and disassembly required in a busy sports facility.

Superior Playing Characteristics

Precision panels of northern hard maple are factory assembled over 1/2" underlayment board securely attached to 2" x 2" LSL Trust Joist Stringers providing a playing surface with the natural resiliency of wood. This natural resilience offers better footing and a "live" action feel. The result - a floor preferred by players everywhere.

The PRO-KING sub-floor fastening system affords total control of expansion due to normal changes in humidity. This assures a tight fitting and level playing surface. In addition, the hidden fastening system leaves the surface free of nails or locking hardware for greater safety. Players perform better with less fatigue and less chance of leg and ankle injuries.

Construction

Each panel is constructed of 2 1/4" wide MFMA northern hard maple strip flooring over 1/2" underlayment board (1 1/2" wide maple strip flooring is also available). Attached with specially coated nailing cleats, the playing surface and underlayment is laid over accurately placed stringers to increase the stability of each panel. The maple flooring strips are individually fastened to each framing member. Specially coated nailing cleats provide more durable fastening than the commonly used powernails or face nails used in other floors.

The completed panels are sealed and finished with the finest oil-modified urethane available.

The Pro-Pivot, slide lock, end connectors and Pro-Lock are fabricated from 1/4" steel. This hardware is securely bolted and screwed to framing members, underlayment and maple flooring. Combined with the flooring's own tongue and groove construction, this system assures resistance to loosening and damage during installation.

Your PRO-KING portable is sanded and finished in our own facilities under controlled temperature and humidity conditions. After the floor is completely sealed, court markings are expertly applied by our finishing staff. After painting, three coats of finish are applied.

The completed floor is allowed to dry for a minimum of 72 hours before being shipped. All panels are marked to facilitate identification. Final adjustment to the floor will be done at your site as part of

the first installation. Our representative will instruct your crew in the best way to assemble and disassemble the floor as well as explain the best way to handle, store and maintain the PRO-KING floor.

Accessories Available

Storage carts (Item PKSC_486) provide mobile storage and the most convenient means to keep each section in proper rotation for easy placement and removal. These trucks are all steel low-bed design and provided with the correct wheels to accommodate the particular surface on which they will be moved.

We can also provide a built in Volleyball System whereby no holes have to be drilled into the concrete slab. This saves much time in the installation process and disassembly procedure.

Horner Quality Saves Money

PRO-KING portables are manufactured at the same site as the MFMA maple flooring used to fabricate them. This results in superior quality control that pays dividends over the long run. Our tough northern hard maple is unequalled for resistance to wear and identification.

Our Pro-Pivot system offers significant savings in labor costs and down time between events. When you add up all the benefits, you will be convinced that the PRO-KING is indeed the move to make in portable basketball floors.

International Acceptance

Horner's PRO-KING has been used in such international events as the 1983 World University Games in Edmonton, Alberta, Canada, the 1983 and 1987 Pan-American Games held in Venezuela and Indianapolis, respectively, the 1984 Los Angeles Olympic Games, the 1990 Goodwill Games in Seattle, the Japan-NBA Opening Games in Tokyo and Yokohama, the 1993 European Championship in Munich, Germany, and the McDonalds-NBA games for 1988-1993 in Milwaukee, Madrid, Rome, Barcelona, Paris and Munich. In 1994, the PRO-KING was the floor chosen for the World Championship of Basketball in Toronto, Ontario, Canada, where it was used in Copps Coliseum, Maple Leaf Gardens and the Sky Dome. Horner's PRO-KING is the fastest selling portable available, accepted worldwide as the leader in portable floors.

SPECIFICATIONS

Scope of Work

It is the intent of this section to furnish all materials and complete instructions for installing a PRO-KING Portable Basketball Floor over concrete, synthetic or approved insulated floor when installation will be made over an ice sheet. Work shall include section (panel fabrication), sanding and court markings in accordance with owner's instructions, finishing and assembly at owner's facility. Material and workmanship shall result in completed floor for use in International, College and Professional competition. The facility personnel shall be instructed in assembly and disassembly of the floor by a qualified representative of the manufacturer.

The portable basketball floor size shall be 60' by 112' (nominal), or as requested by owner subject to the following: the length and width can each be increased or decreased in multiples of 4'. Sections of the floor shall be jig built with accuracy that will permit interchanging of sections subject to court markings. Both 8' and 4' sections shall be furnished to permit staggering of section end joints preventing one continuous joint running across full width of floor. Appearance when complete shall be that of a permanent basketball floor.

Materials

1. The playing surface shall be 25/32" x 2 1/4" MFMA Northern Hard Maple. No beech or birch flooring shall be used. If called for, a MFMA certificate is available. Grade shall be First, Second & Better or Third Grade as defined by the Maple flooring Manufacturers Association (MFMA) Option: 25/32" x 1 1/2" or 33/32" x 1 1/2" Northern Hard Maple.
2. Underlayment shall be 48" x 96" x 1/2" (nominal), securely attached to 2" x 2" Trust-Joist LSL framing. Option: When requested, sub-floor materials may be coated with a moisture retarding and or termite resisting material. Such material shall be factory-applied by portable floor manufacturer or sub-floor material manufacturer.
3. Fastener shall be 8 penny specially coated nailing cleats. No screw-tite, powernails or cut nails shall be permitted.
4. Hidden Pro-Pivot hinge and sliding lock and end connectors shall be of 1/4" steel.
5. Floor sealer and finish shall be Oil Modified Urethane Finish as approved by the Maple flooring Manufacturers Association (MFMA). Court marking paint color shall be submitted to floor manufacturer for approval.

Option(s)

1. When selecting Pro-King[®] Plus, Pro-Shock[™] pads shall be installed on each stringer as per manufacturer's specification. Pro-Shock pads shall be 7/16" thick and possessing reverse cavity voids and structural webs yielding specific performance characteristics. (Option: PS-ES Inserts may be inserted to adjust pad height to 1/2", 5/8" or 3/4")

2. Side and end profile of each panel shall consist of HDPE continuous tongue and groove alignment and interlocking glides.
3. Floor panels may be configured for a Center Lay (CL) orientation if so specified.

Fabrication of Sections

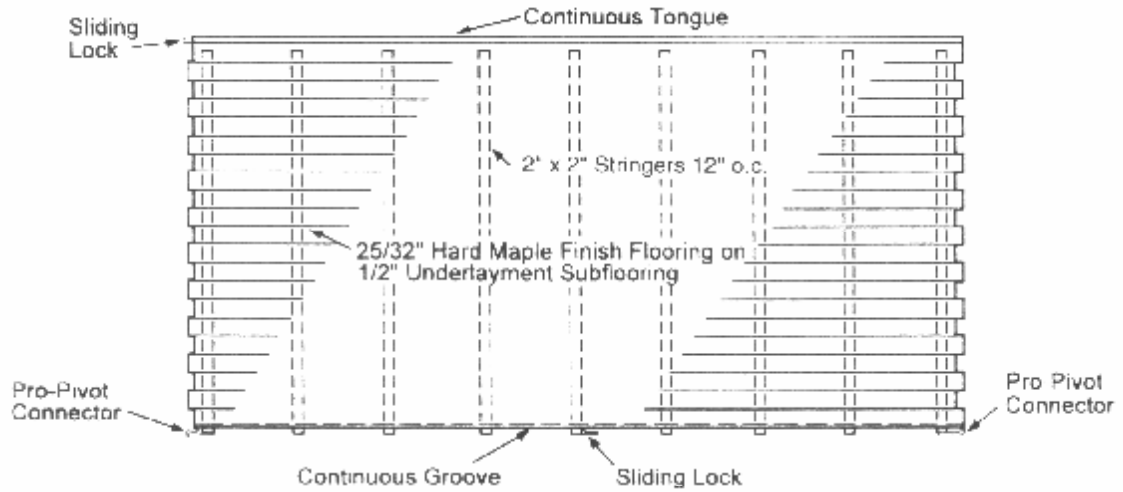
1. Floor sections shall be jig built as per shop print to attain maximum accuracy. Each 8' section shall incorporate vertically placed framing members. Underlayment shall be fastened to framing members 6" o.c.
2. Maple flooring strips are fastened to each framing member. Expansion shall be as decided by manufacturer after considering geographical locations and considering conditions in the building where the floor will be used. Interlocking finger joints shall be provided at section ends. (Option: square end panel incorporating a plastic tongue and Pro-Fast fastener.) Sides and ends shall be tongue and groove fit incorporating wood tongue and groove or optional plastic tongue. Appearance, when sections are put together, shall be that of a permanent floor.
3. Hidden Pro-Pivot hinge, sliding lock, end connectors and Pro Lock shall be bolted to framing members at pre-determined locations. These locking devices shall be concealed from view.
4. After sections have been fabricated, the floor shall be laid over a smooth, level base in a temperature controlled area.
5. After floor is properly laid in place, power sanding shall commence in strict accordance with instructions of manufacturer of sealer and finish selected. All steps in the sanding, sealing, court markings and finishing shall be performed by men experienced in this type of work. All painting shall be performed after floor has been properly sealed. After painting, three coats of finish shall be applied.
6. After the finished floor has been completed, it shall be left to dry under controlled conditions for a minimum of 72 hours. After drying has been completed, the floor will be shipped by flat-bed truck to owner's building site.
7. All panels shall be marked with letters and numbers to facilitate identification.
8. Final adjustment to the floor shall be at owner's facility as part of the first installation.
9. Shop drawings and details will be forwarded at owner's request prior to start of fabrication of panels.

Installation at Owner's Facility

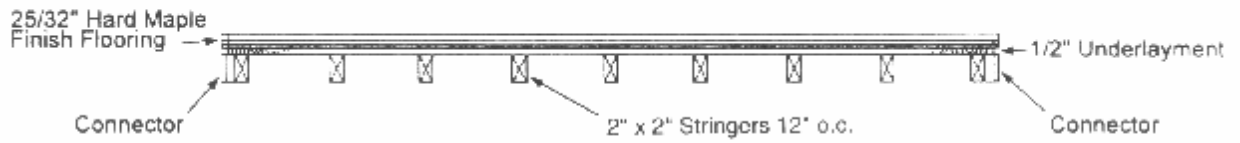
1. When requested by owner, floor shall be shipped to building site. Floor shall be shipped in units of fourteen sections, steel strapped together for fork lift unloading. Finished faces of sections shall be separated with suitable material to prevent damage. Unloading shall be performed under guidance of manufacturer's representative.

2. Manufacturer's representative shall be sent to arena site at manufacturer's expense to direct first installation of floor.
3. Area in which floor is to be laid shall be clean, dry and ready to receive floor. Subfloor surface shall be held to within a tolerance of 1/8" in 10 feet in any direction.
4. Owner shall provide at least a four man crew at no expense to the manufacturer including one lead man of supervisory capacity to be instructed by the factory representative in the best way to assemble and disassemble the floor and explain the proper handling, storage and maintenance and to answer any questions that may arise prior to his departure.

DETAIL OF PANELS



TOP PANEL PLAN

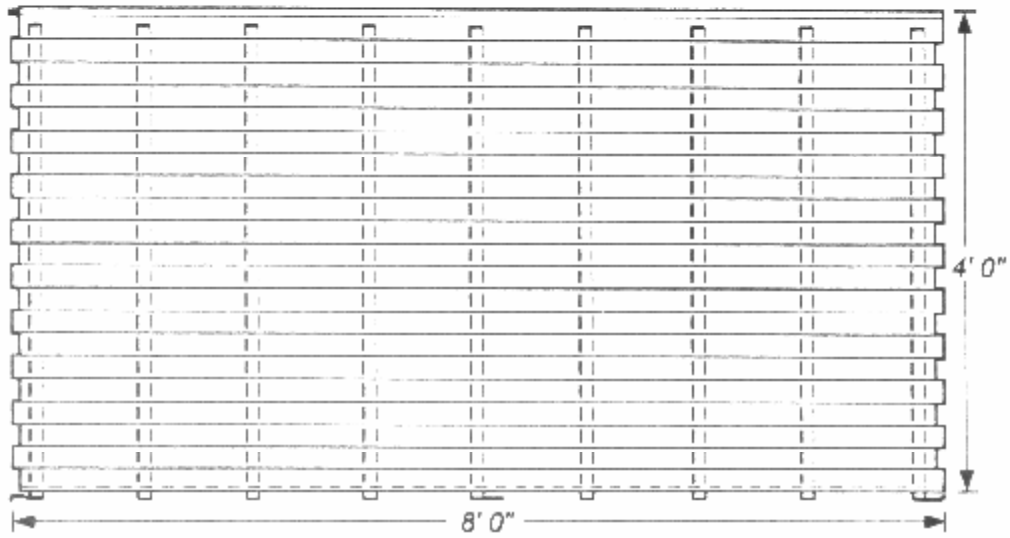


SIDE VIEW



END VIEW

Panel Plan View



End View



Side View

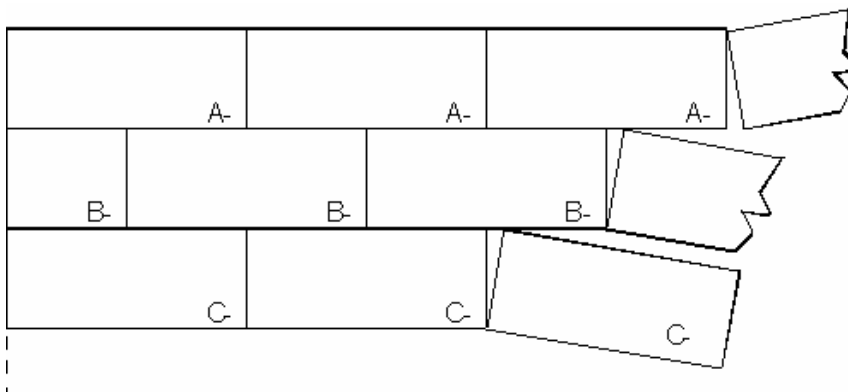
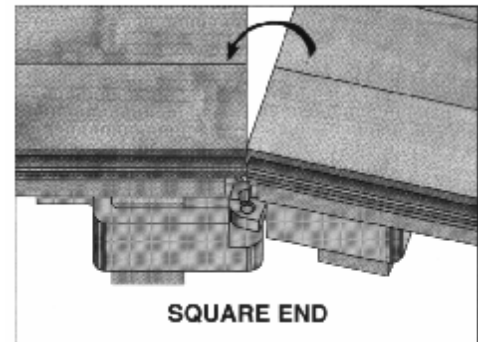
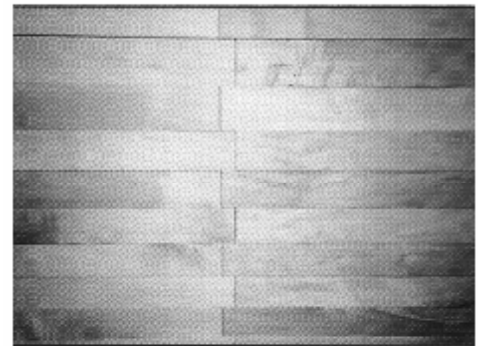
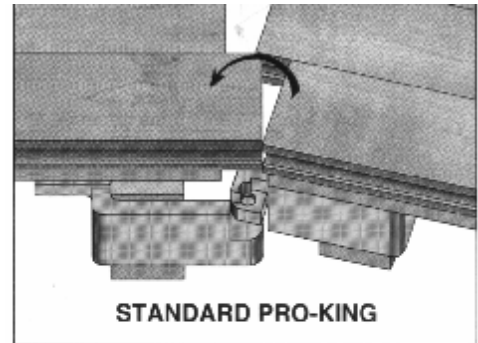


INSTALLATION INSTRUCTIONS

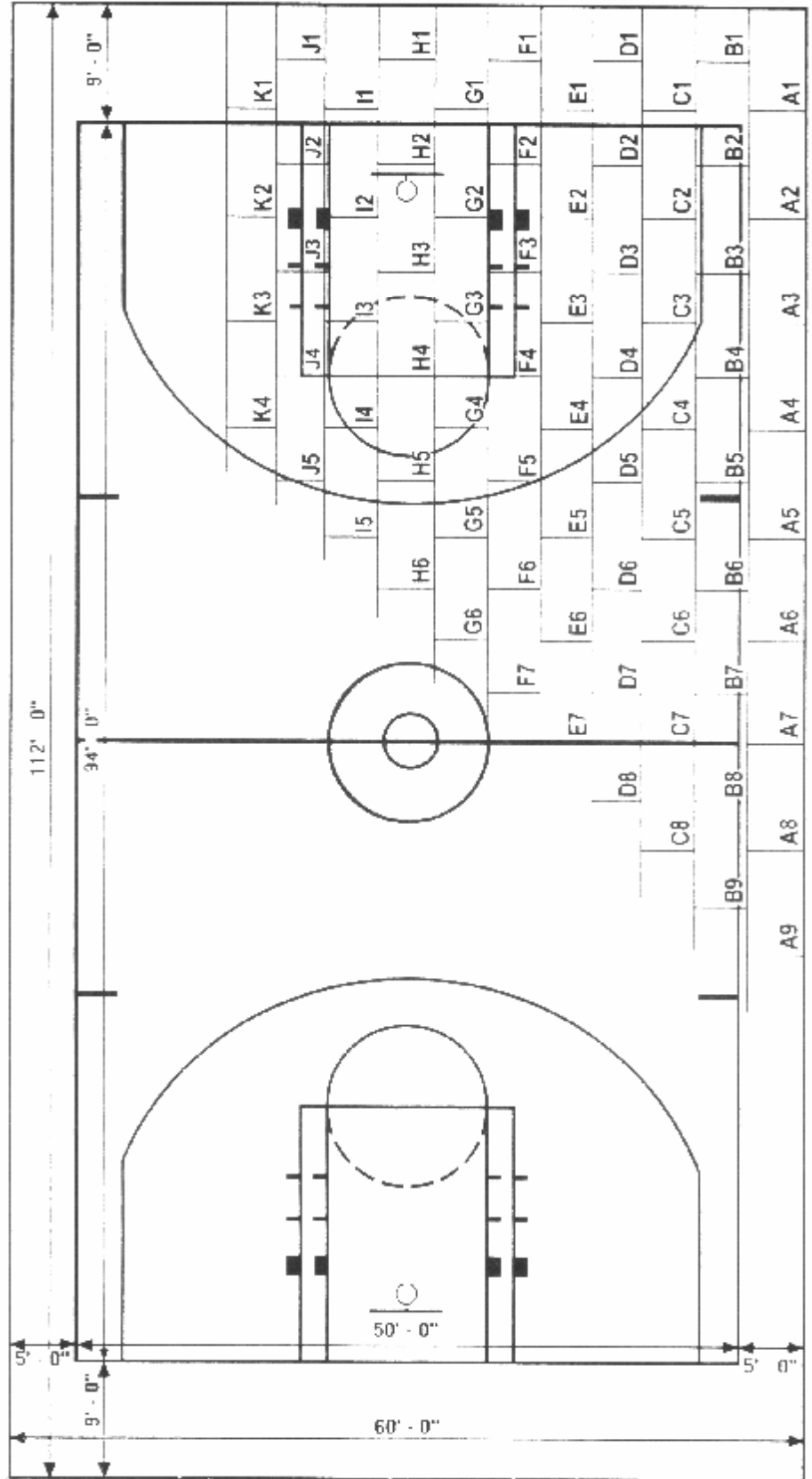
1. Find starting point for Panel A-1. Set Panel A-1 on floor at starting point. Place Panel A-2 next to the end of A-1 at an angle of approximately 45°. Engage Pro-Pivot. Swing Panel A-2 counter-clockwise, making sure Panels A-1 and A-2 butt tightly together. Follow the same procedure with the remainder of Row A.

Note: If arena has a camera area, Row A should be located on the same side of the arena as the camera area.

2. Start Row B with Panel B-1. (Panel B-1 will be a 4' x 4' panel). Slide the panel in place by engaging the sliding lock into the U-shaped end lock. Angle of B-1 should be approximately 5°. Slide panel B-1 counter-clockwise. Place panel B-2 next to the end of B-1 at an angle of approximately 45°. Engage Pro-Pivot and swing panel B-2 counter-clockwise into place. Continue remainder of Row B. When Panel B-14 has been set into place, tighten nut on end of locking hardware.
3. Row C through Row O are installed in the same manner as Row B .



PANEL FLOOR PLAN



CARE AND MAINTENANCE INSTRUCTIONS

Storage Area

Storage area should be dry and well ventilated. The area should be heated to a minimum of 60° and relative humidity should be in the 45% to 55% range.

Activity Area

Permanent heat, light and ventilation should be installed and operating during and after installation of the floor, maintaining a temperature range of 55 degrees to 75 degrees Fahrenheit with a relative humidity range of 35 to 55 percent.

Moving Panels To and From Storage Area

Storage carts are available to move the portable floor from storage area to arena and back. Each row should have its own storage cart.

Fork lift truck may be used if simple precautions are taken. Forks should be extended to 48" to give solid lift to whole panel. Forks should spread 42" to prevent tipping.

When stacking floor, care should be used to place panels face to face then back to back. Protectors should be placed between panel faces. Material shipped with the floor may be used. Panels will nest for storage.

Finish Protection

Your portable basketball floor has been finished with four (4) coats of the finest oil modified urethane available. This should, under normal wear, give one to two years of excellent service. The floor should be dry mopped with a cotton sweeping mop before each game, during half-time and prior to storage to remove any grit that might be on the surface. If floor is left down for a longer period of time, mop surface daily.

In-house refinishing can be done under the direction of floor manufacturer.